



---

# **Database Views**

---

**User Guide**

Version R95

English

July 20, 2017

**Copyright Agreement**

The purchase and use of all Software and Services is subject to the Agreement as defined in Kaseya's "Click-Accept" EULATOS as updated from time to time by Kaseya at <http://www.kaseya.com/legal.aspx>. If Customer does not agree with the Agreement, please do not install, use or purchase any Software and Services from Kaseya as continued use of the Software or Services indicates Customer's acceptance of the Agreement."

# Contents

Database Views and Functions .....	1
Excel Usage .....	1
Crystal Reporting Usage .....	2
Views and Functions Provided.....	5
fnMissingPatchCounts_UsePolicy / fnMissingPatchCounts_NoPolicy.....	7
fnOSCounts.....	8
vAddRemoveList.....	9
vAdminNotesLog .....	9
vAgentConfiguration .....	10
vAgentLabel .....	11
vAlertLog.....	12
vBackupLog.....	12
vBaseApplicationInfo / vCurrApplicationInfo .....	13
vBaseCpuInfo / vCurrCpuInfo .....	14
vBaseDiskInfo / vCurrDiskInfo .....	15
vBaseDriveManufacturer / vCurrDriveManufacturer .....	15
vBasePciInfo / vCurrPciInfo .....	16
vBasePrinterInfo / vCurrPrinterInfo .....	16
vCollectionMember .....	17
vConfigLog.....	17
vEventDetail .....	17
vEventInstanceDetail .....	19
vEventInstanceHistoryDetail .....	20
vLicenseInfo.....	22
vMachine .....	22
vMonitorAlarmAlert.....	25
vMonitorAlarmCounter .....	26
vMonitorAlarmProcess .....	27
vMonitorAlarmService .....	27
vMonitorAlarmSNMP .....	28
vMonitorAlarmSystemCheck.....	29
vNetStatsLog.....	30
vNtEventLog.....	31
vOnBoardDeviceInfo.....	31
vPatchApprovalPolicyStatus.....	32
vPatchApprovalStatus .....	33
vPatchConfiguration.....	34
vPatchPieChartCountsNoPolicy .....	36
vPatchPieChartCountsUsePolicy.....	36

**vPatchPolicy .....37**  
**vPatchPolicyMember .....38**  
**vPatchStatus .....39**  
**vPatchStatusByAgent.....41**  
**vPortInfo.....43**  
**vScriptLog.....44**  
**vScriptStatus.....44**  
**vSystemInfo .....45**  
**vSystemInfoManual .....46**  
**vTicketField.....46**  
**vTicketNote .....47**  
**vTicketSummary .....47**  
**vUptimeHistory .....48**  
**vvProAssetDetails .....49**  
**Index.....51**

---

# Database Views and Functions

System > Database Access > Database Views

The system exposes a set of **database views and database functions** (page 5) allowing clients to directly access data within the Kaseya repository. The database functions can be thought of as parameterized views. These views can be used to bring data into a spreadsheet for analysis or to prepare reports. This document describes the views and functions and gives two example applications, **Crystal Reporting** (page 2) and **Microsoft Excel** (page 1). Kaseya does not present itself as an expert in how to use Excel or Crystal. These examples are to assist in the basics of getting started. For third party product training or other questions please contact the third party tool vendor. Finally, an appendix is provided with a field-by-field description of the contents of the views and functions.

The views provided can be broken into **four groups of database views** (page 5).

- The first group provides information on all the **machines** being monitored.
- The second group provides information about the **activity and current status** of key parts of the system.
- The third group provides information on the **ticketing** system.
- The fourth group provides information on the **monitoring** alarms.

## Accessing the Database Views

The database views are installed or updated whenever the **Reapply Schema** action is taken. A single database user ID, `KaseyaViews` is provided to access these views.

1. For security purposes, you must first create or change the password for the `KaseyaViews` user ID by entering the password in the System > **Database Views** page.
2. From that point forward, you can use external applications, such as Crystal Reports or Excel, to access the database views directly, using the `KaseyaViews` user ID and the password you have entered.

---

# Excel Usage

## Creating a Data Source in Windows

Microsoft Excel can access the views by setting up a data source. A data source is a core definition within Microsoft. Most Microsoft products have facilities to access data through a data source definition. Selecting the Settings option from the Start button allows the creation a data source. From the Settings option select the Control Panel. From the Control Panel next select Administrative Tools. From this menu a data source can be created.

The data source should be set up as a System DSN. From this dialog, create a source using the SQL Server driver. The set-up will require the name of the database server (usually the ComputerName), the user id (`KaseyaViews`) and password, and the database schema name (`ksubscribers`).

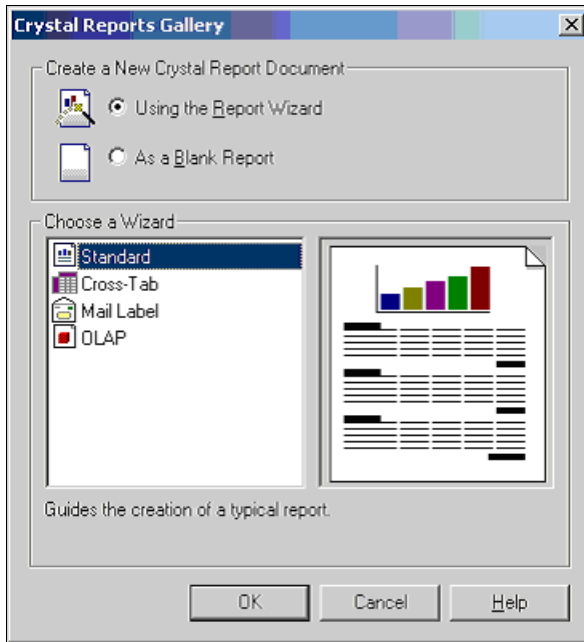
## Selecting the Data Source in Excel

Once a data source is created it can be referenced by Excel. Open a blank spreadsheet and select the **Data > Get External Data > New Database Query...** option. The user is prompted for the credentials to the database. Once this completes a view can be selected. A SQL query can be constructed to bring information directly into Excel at this point.

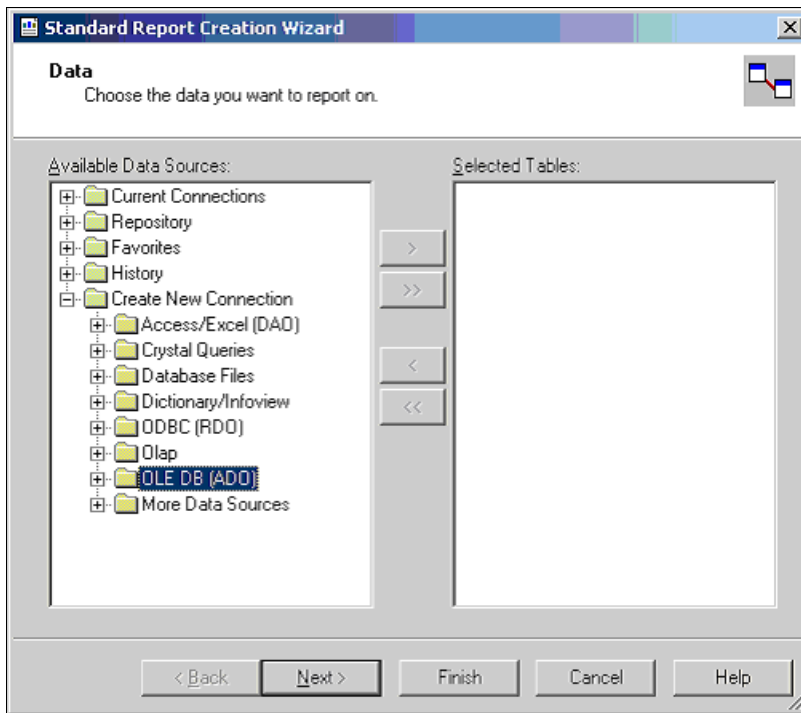
# Crystal Reporting Usage

Crystal Reporting can be used to create client specified reports. Crystal 9 and 10 can be used to produce various output formats include PDF, Word and Excel. To set up a report the Crystal Report Wizard can be used. This process begins with the following dialog.

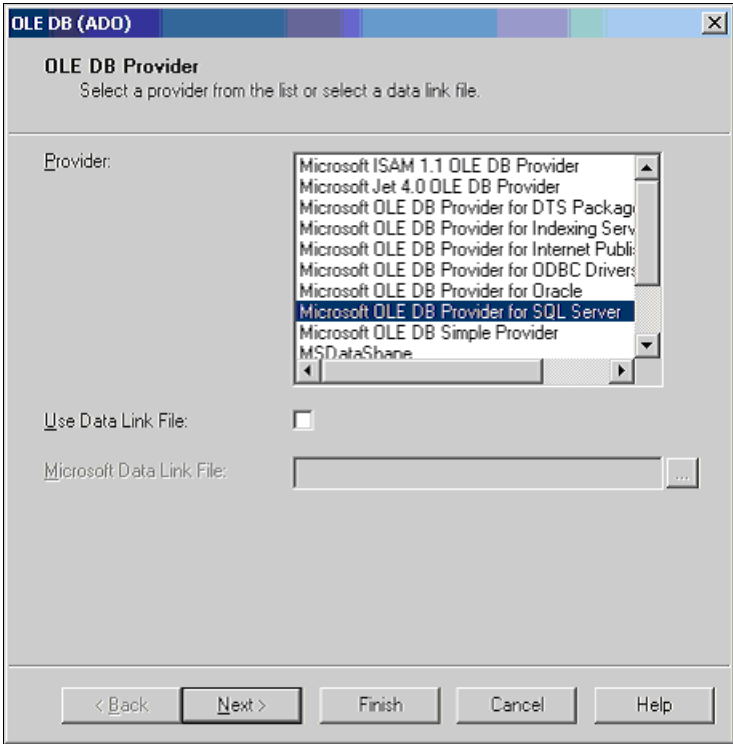
1. The client picks a report format. For this example standard will be used.



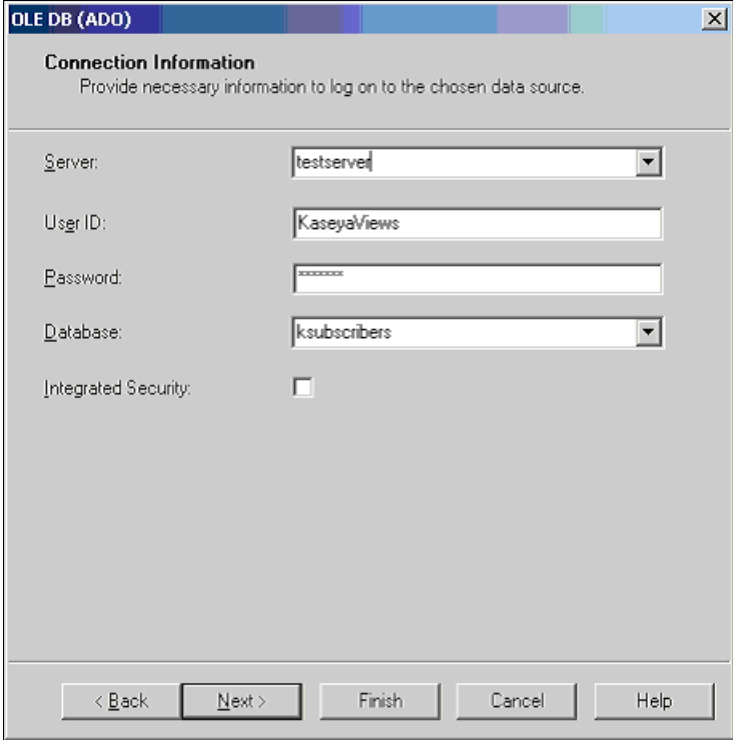
2. Next the data source is selected. This begins by picking an access method. ADO should be selected.



- 3. Once ADO is selected the SQL Server driver can be selected. This is the correct selection to access the Kaseya database.

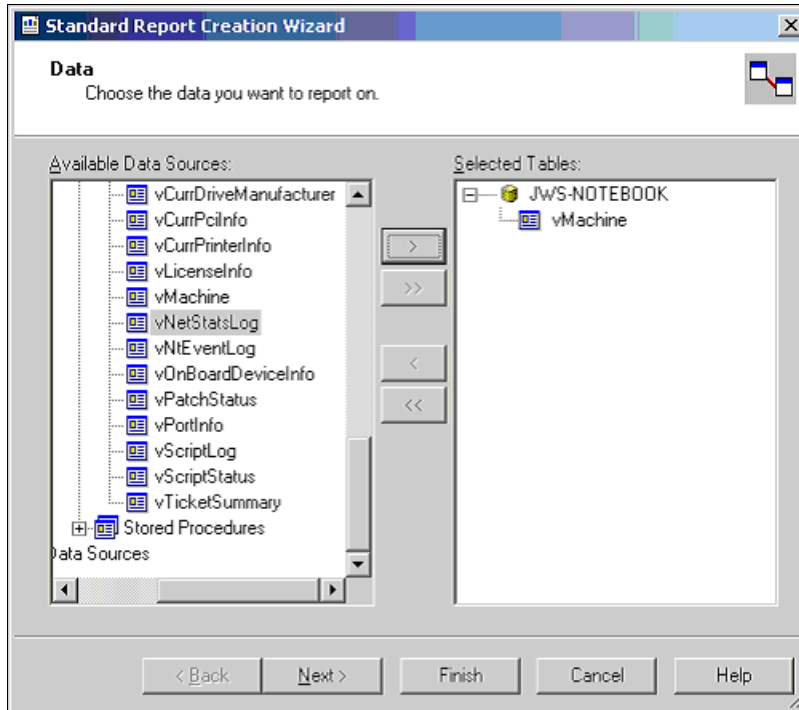


- 4. The next step is providing the credential to make connection to the database. As shown in this dialog, the Server, User Id, Password, and Database must be provided.

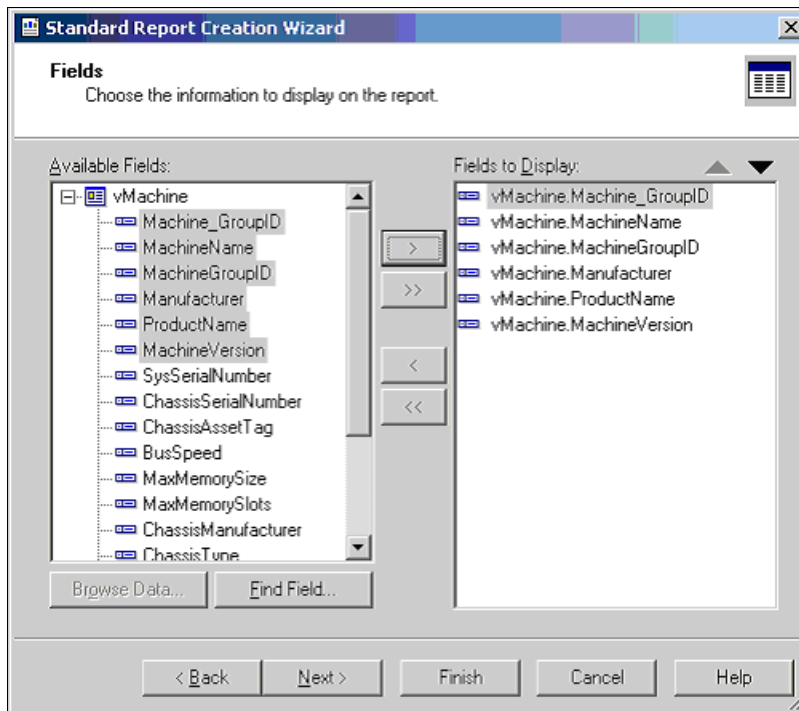


## Crystal Reporting Usage

5. Once the credentials are provide all the available views are displayed. Pick one or more for the report desired.

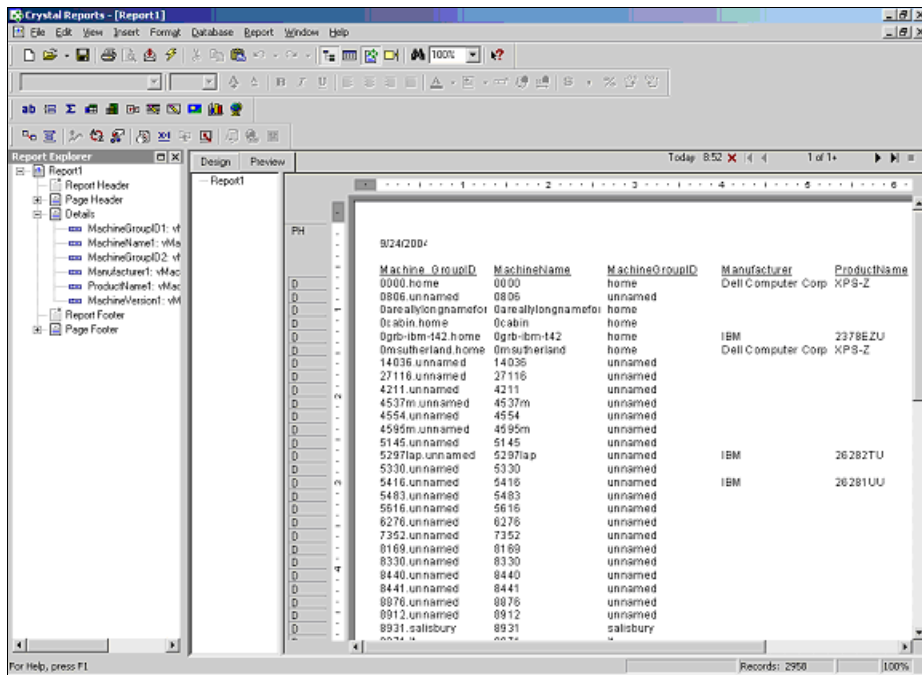


6. After a view is selected the columns to be included can then be selected. Crystal provides a variety of ways to format this data. This document does not attempt to describe these options. The Crystal documentation should be reviewed for this information.







7. The resulting report can be printed or emailed to the appropriate consumers of the report. The format of the report can be designated. This facility can be used to produce a PDF or a variety of other formats.






## Views and Functions Provided

**Note:** Views can be returned using the API web services operations *GetPublishedViews*, *GetPublishedViewRows*, and *GetPublishedViewColumns*.

**Note:** Items marked with a flag icon  are parameterized functions that are not available via the API web service operations described above. On premises users can access these flag icon  functions using SQL Server.

Machines Group	
<b>vAddRemoveList</b> (page 9)	Add/remove application list returned by the latest audit.
<b>vBaseApplicationInfo</b> (page 13)	The baseline list of applications on a client desktop machine.
<b>vBaseCpuInfo</b> (page 14)	The baseline list of the CPUs in a client desktop machine.
<b>vBaseDiskInfo</b> (page 15)	The baseline list of the disks in a client desktop machine.
<b>vBaseDriveManufacturer</b> (page 15)	The baseline list of the manufacturers of the disks in a client desktop machine.
<b>vBasePciInfo</b> (page 16)	The baseline list of the PCI cards in a client desktop machine.
<b>vBasePrinterInfo</b> (page 16)	The baseline list of printers in a client desktop machine.
<b>vCollectionMember</b> (page 17)	List the collections each machine ID belongs to (if any)
<b>vCurrApplicationInfo</b> (page 13)	The current list of applications on a client desktop machine.
<b>vCurrCpuInfo</b> (page 14)	The current list of the CPUs in a client desktop machine.

## Views and Functions Provided

<b>vCurrDiskInfo</b> (page 15)	The current list of the disks in a client desktop machine.
<b>vCurrDriveManufacturer</b> (page 15)	The current list of the manufacturers of the disks in a client desktop machine.
<b>vCurrPciInfo</b> (page 16)	The current list of the PCI cards in a client desktop machine.
<b>vCurrPrinterInfo</b> (page 16)	The current list of printers in a client desktop machine.
<b>vLicenseInfo</b> (page 22)	The licenses of applications on this machine.
<b>vMachine</b> (page 22)	The information known about each client desktop machine.
<b>vOnBoardDeviceInfo</b> (page 31)	The current list of on board devices in a client desktop machine.
<b>vPortInf</b> (page 43)	The current list of ports in a client desktop machine.
<b>vSystemInfo</b> (page 45)	Data collected by the Audit > System Info function.
<b>vSystemInfoManual</b> (page 46)	Custom fields and values added to the SystemInfo function.
<b>vUptimeHistory</b> (page 48)	Data collected for the uptime history report. Use in conjunction with the getMachUptime web service.
<b>vvProAssetDetails</b> (page 49)	Lists information about a vPro enabled machine, including manufacturing details about the motherboard.
<b>Activity / Status Group</b>	
<b>fnMissingPatchCounts_Use Policy</b> (page 7) 	Returns the number of patches, using the patch approval policies, for the specified machine group. Tabular data as seen in the missing patch pie charts in the executive summary reports and the View Dashboard page under the Home tab. Only one row is returned.
<b>fnMissingPatchCounts_No Policy</b> (page 7) 	Returns the number of patches, without using the patch approval policies, for the specified machine group. Tabular data as seen in the missing patch pie charts in the View Dashboard page under the Home tab. Only one row is returned.
<b>fnOSCounts</b> (page 8) 	Returns the types of operating systems and the counts for each for the specified machine group. Tabular data as seen in the OS pie charts in the executive summary reports and the View Dashboard page under the Home tab. Returns one row for each OSType.
<b>vAdminNotesLog</b> (page 9)	Notes each admin enters manually for a machine or group of machines. Entries in this log never expire.
<b>vAgentConfiguration</b> (page 10)	Lists agent specific configuration data
<b>vAgentLabel</b> (page 11)	Identifies the status of agents. Used for display purposes.
<b>vAlertLog</b> (page 12)	Logs each alert sent out via email. Multiple rows per machine.
<b>vBackupLog</b> (page 12)	Logs all backup related events
<b>vConfigLog</b> (page 17)	Log of all configuration changes. One entry per change.
<b>vEventDetail</b> (page 17)	Provides a description of an event.
<b>vEventInstanceDetail</b> (page 19)	Provides a description of an event instance that was triggered.
<b>vEventInstanceHistoryDetail</b> (page 20)	Provides a history of event instances that were triggered.
<b>vNetStatsLog</b> (page 30)	Network statistics log from the Agent.
<b>vNtEventLog</b> (page 31)	NT Event log data collected from each managed machine.
<b>vPatchApprovalPolicyStatus</b> (page 32)	The patch approval status of a patch by patch policy.

<b>vPatchApprovalStatus</b> (page 33)	Show the approval status of a patch. There is one row for each active patch.
<b>vPatchPieChartCountsNoPolicy</b> (page 36)	Provides patch counts for machines without an assign policy.
<b>vPatchPieChartCountsUsePolicy</b> (page 36)	Provides patch counts for machines with an assigned policy.
<b>vPatchPolicy</b> (page 37)	Show the approval status of a patch. There is one row for each active patch in each patch policy.
<b>vPatchPolicyMember</b> (page 38)	Lists all patch policies to which each machine ID is a member, if any.
<b>vPatchStatus</b> (page 39)	Information on the state of all patches on a per machine basis. There is one row per patch for each machine.
<b>vPatchStatusByAgent</b> (page 41)	Describes the patch status of an individual agent machine.
<b>vScriptLog</b> (page 44)	Log of procedure executions as viewed by the Kaseya Server.
<b>vScriptStatus</b> (page 44)	Procedure status for each client.
<b>Ticketing Group</b>	
<b>vTicketSummary</b> (page 47)	Trouble ticket summary. One row per ticket. Column names are used as the names displayed in the view summary table.
<b>vTicketNote</b> (page 47)	The notes associated with a ticket. Potentially multiple rows per ticket.
<b>vTicketField</b> (page 46)	The fields associated with a ticket. The standard fields, category, status and priority are always attached to a ticket. User fields added will also be included in this view.
<b>Monitor Alarm Group</b>	
<b>vMonitorAlarmAlert</b> (page 25)	The current list of alarms for all alerts.
<b>vMonitorAlarmCounter</b> (page 26)	The current list of alarms for all monitor counters.
<b>vMonitorAlarmProcess</b> (page 27)	The current list of alarms for all monitor processes.
<b>vMonitorAlarmService</b> (page 27)	The current list of alarms for all monitor services.
<b>vMonitorAlarmSNMP</b> (page 28)	The current list of alarms for all monitor SNMP Get objects.
<b>vMonitorAlarmSystemCheck</b> (page 29)	The current list of alarms for all system checks.

## fnMissingPatchCounts\_UsePolicy / fnMissingPatchCounts\_NoPolicy

Both of these functions use the same parameters and return the same columns but each has different filtering based on patch approval policies.

fnMissingPatchCounts_UsePolicy	Returns the number of patches, using the patch approval policies, for the specified machine group. Tabular data as seen in the missing patch pie charts in the executive summary reports and the View Dashboard page under the Home tab.
--------------------------------	--

## fnOSCounts

fnMissingPatchCounts_NoPolicy	Only one row is returned.	
fnMissingPatchCounts_NoPolicy	Returns the number of patches, without using the patch approval policies, for the specified machine group. Tabular data as seen in the missing patch pie charts in the View Dashboard page under the Home tab. Only one row is returned.	
Parameter	Type	Purpose
@groupName	varchar	Machine group name; Use null or an empty string for all groups
@skipSubGroups	tinyint	When a group name is provided in the above parameter, determines whether to filter the results for only the one specified group or for the specified group and all of its subgroups: 0 = Use specified group and all of its subgroups 1 = Skip subgroups – use only the one specified group
Column	Type	Purpose
GroupName	varchar	Machine group name; Returns "All Groups" when the @groupName parameter is null or an empty string
WithSubgroups	varchar	YES when @skipSubGroups = 0 and for "All Groups" NO when @skipSubGroups = 1
FullyPatched	int	Count of fully patched machines in the group specified by the parameters
Missing12	int	Count of machines missing 1-2 patches in the group specified by the parameters
Missing35	int	Count of machines missing 3-5 patches in the group specified by the parameters
MissingMore5	int	Count of machines missing 5 or more patches in the group specified by the parameters
Unscanned	int	Count of unscanned machines in the group specified by the parameters
Unsupported	int	Count of machines for which patching is not supported in the group specified by the parameters

### Examples

In the examples below replace `machinegroup` with the name of the machine group you are using. If a machine group is not included then data for All Groups is returned.

```
SELECT FROM * fnMissingPatchCounts_UsePolicy(' ',0)
SELECT FROM * fnMissingPatchCounts_UsePolicy('machinegroup',0)
SELECT FROM * fnMissingPatchCounts_NoPolicy(' ',0)
SELECT FROM * fnMissingPatchCounts_NoPolicy('machinegroup',0)
```

---

## fnOSCounts

fnOSCounts	Returns the types of operating systems and the counts for each for the specified machine group. Tabular data as seen in the OS pie charts in the executive summary reports and the View Dashboard page under the Home tab. Returns one row for each OSType.	
Parameter	Type	Purpose
@groupName	varchar	Machine group name; Use null or an empty string for all groups

@skipSubGroups	tinyint	When a group name is provided in the above parameter, determines whether to filter the results for only the one specified group or for the specified group and all of its subgroups: 0 = Use specified group and all of its subgroups 1 = Skip subgroups – use only the one specified group
Column	Type	Purpose
OSType	varchar	Operating system type such as "Win XP", Win Vista", and "Mac OS X"
OSCount	int	Count of operating system type in the group specified by the parameters

---

## vAddRemoveList

vAddRemoveList	add/remove application list returned by the latest audit	
Column Name	Type	Purpose
Machine_GroupID	varchar(201), null	A concatenated representation of the machine id and the group id it is associated with.
agentGuid	numeric(26, 0), null	A globally unique identifier for a machine ID.group ID account and its corresponding agent.
machName	varchar(100), null	Machine Name used for each agent
groupName	varchar(100), null	organization, then machine group the machine is assigned to
applicationName	varchar(260), null	App name from the add/remove programs list

---

## vAdminNotesLog

vAdminNotesLog	Notes each admin enters manually for a machine or group of machines. Entries in this log never expire.	
Column Name	Type	Purpose
Machine_GroupID	varchar(201), null	A concatenated representation of the machine id and the group id it is associated with.
agentGuid	numeric(26, 0), null	A globally unique identifier for a machine ID.group ID account and its corresponding agent.
AdminLogin	varchar(100), not null	Admin logon name. (note: no not name this col adminName)
EventTime	datetime(3), not null	Time stamp string representing the time the action took place. Default is CURRENT_TIMESTAMP so nothing needs to be entered here.
NoteDesc	varchar(2000), not null	description of the action

# vAgentConfiguration

vAgentConfiguration		Logs each alert sent out via email. Multiple rows per machine
Column Name	Type	Purpose
Machine_GroupID	varchar(201), null	A concatenated representation of the machine id and the group id it is associated with.
agentGuid	numeric(26, 0), not null	A globally unique identifier for a machine ID.group ID account and its corresponding agent.
machName	varchar(100), null	Machine Name used for each agent
groupName	varchar(100), null	Organization, then machine group the machine is assigned to.
firstCheckin	datetime(3), null	timestamp recording the first time this agent checked into the system
lastCheckin	datetime(3), null	timestamp recording the most recent time this agent checked into the system
currentUser	varchar(100), null	login name of the currently logged in user. Blank if no one logged in at this time
lastLoginName	varchar(100), not null	login name of the last user to log into this system
workgroupDomainType	tinyint(3), not null	0 (or Null) = unknown 1 = not joined to either 2 = member of workgroup 3 = member of domain 4 = domain controller
workgroupDomainName	nvarchar(32), null	The name of the workgroup or domain
lastReboot	datetime(3), null	timestamp when this system was last rebooted
agentVersion	int(10), null	version number of agent installed on this system
contactName	varchar(100), null	User contact name assigned to this agent
contactEmail	varchar(100), null	User email address assigned to this agent
contactPhone	varchar(100), null	Contact phone number assigned to this agent
contactNotes	varchar(1000), null	Notes associated with the contact information for this agent
enableTickets	int(10), not null	0 if this user does not have access to ticketing through the user interface
enableRemoteControl	int(10), not null	0 if this user does not have access to remote control through the user interface
enableChat	int(10), not null	0 if this user does not have access to chat through the user interface
loginName	varchar(100), not null	Login Name assigned to this user (if any) to access the system user portal interface.
credentialName	varchar(100), not null	The username of the credential set for this agent (if any)
primaryKServer	varchar(111)	address:port agent connects to for its primary Kaseya Server

	, null	connection
secondaryKServer	varchar(111) , null	address:port agent connects to for its secondary Kaseya Server connection
quickCheckinSecs	int(10), null	interval in seconds between quick checkins
agentTempDir	varchar(200) , null	The working directory used by the agent on this system

## vAgentLabel

vAgentLabel		
Column Name	Type	Purpose
Identifies the status of agents. Used for display purposes.		
displayName	varchar(201), null	The name of the machine ID.group name.
Machine_GroupID	varchar(201), null	A concatenated representation of the machine id and the group id it is associated with.
agentGuid	numeric(26,0), not null	A globally unique identifier for a machine ID.group ID account and its corresponding agent.
agentGuidStr	varchar(26), null	A string version of agentGuid. Some languages convert the large number numeric to exponential notation. This string conversion prevents that.
online	int(10), null	0 -> offline 1 -> online 2 -> online and user has not used the mouse or keyboard for 10 minutes or more. 198 -> account suspended 199 -> agent never checked in (template account)
transitionTime	datetime(3), null	Applies when online is either 0 or 2. <ul style="list-style-type: none"> <li>When online is 0, the time at which the Agent last checked in.</li> <li>When online is 2, the time when the machine was deemed idle (10 minutes after the last mouse or keyboard entry).</li> </ul>
timezoneOffset	int(10), null	The timezone offset for the agent as compared to universal time.
currentLogin	varchar(100), null	The login name of the current user.
toolTipNotes	varchar(1000), not null	The tooltip text displayed for a machine ID.
showToolTip	tinyint(3), not null	0 -> Do not show machine ID tool tips. 1 -> Do show tool machine ID tool tips.
agntTyp	int(10), not null	0 -> windows agent 4 -> mac agent 5 -> linux agent
agentOnlineStatus	int(10), null	

## vAlertLog

vAlertLog		
Logs each alert sent out via email. Multiple rows per machine		
Column Name	Type	Purpose
Machine_GroupID	varchar(201), null	A concatenated representation of the machine id and the group id it is associated with.
agentGuid	numeric(26, 0), null	A globally unique identifier for a machine ID.group ID account and its corresponding agent.
machName	varchar(100), null	Machine Name used for each agent
groupName	varchar(100), null	organization, then machine group the machine is assigned to
EventTime	datetime(3), null	time stamp when the event was recorded
AlertEmail	varchar(1000), null	email address to send the alert to
AlertType	int(10), null	Alerts are one of several monitor types. 1 - Admin account disabled 2 - Get File change alert 3 - New Agent checked in for the first time 4 - Application has been installed or deleted 5 - Agent Procedure failure detected 6 - NT Event Log error detected 7 - Kaseya Server stopped 8 - Protection violation detected. 9 - PCI configuration has been changed 10 - Disk drive configuration change 11 - RAM size changed. 12 - Test email sent by serverInfo.asp 13 - Scheduled report completed 14 - Network scan alert type 15 - agent offline 16 - low on disk space 17 - disabled remote control 18 - agent online 19 - new patch found 20 - patch path missing 21 - patch install failed 23 - Backup Alert
EmailSubject	varchar(500), null	Email subject line
EmailBody	varchar(4000), null	Email body

## vBackupLog

vBackupLog		
Logs each alert sent out via email. Multiple rows per machine		
Column Name	Type	Purpose
Machine_GroupID	varchar(201), null	A concatenated representation of the machine id and the group id it is associated with.



agentGuid	numeric(26, 0), null	A globally unique identifier for a machine ID, group ID, account, and its corresponding agent.
machName	varchar(100), null	Machine Name used for each agent
groupName	varchar(100), null	organization, then machine group the machine is assigned to
EventTime	datetime(3), null	time stamp when the event was recorded
description	varchar(1000), null	description of the reported task
durationSec	int(10), null	number of seconds the reported task took to complete
statusType	int(10), null	0: full volume backup 1: offsite replication (obsolete) 2: incremental volume backup 3: offsite replication suspended (obsolete) 4: offsite replication skipped because backup failed (obsolete) 5: folder full backup 6: offsite folder suspended (obsolete) 7: differential volume backup 8: folder incremental backup 9: folder differential backup 10: volume verification 11: folder verification 12: volume backup skipped because machine offline 13: folder backup skipped because machine offline 14: Informational 15: Diff or Inc ran as full vol when last full vol not found 16: Diff or Inc ran as full folder when last full folder not found 17: volume backup canceled 18: folder backup canceled 19: volume image conversion (in KBU 3.0) 20: volume synthetic full backup (in KBU 3.0) 21: folder synthetic full backup (in KBU 3.0)
result	int(10), null	0: failure 1: success 2: archive incomplete
imageSize	float(53), not null	The size of the backup.

## vBaseApplicationInfo / vCurrApplicationInfo

vBaseApplicationInfo vCurrApplicationInfo	audit results for installed applications. One entry per installed application found in the registry key HKEY_LOCAL_MACHINE\Software\Microsoft\Windows\CurrentVersion\App Paths.	
Column Name	Type	Purpose
Machine_GroupID	varchar(201), null	A concatenated representation of the machine id and the group id it is associated with.

## vBaseCpuInfo / vCurrCpuInfo

agentGuid	numeric(26, 0), null	A globally unique identifier for a machine ID.group ID account and its corresponding agent.
machName	varchar(100), null	Machine Name used for each agent
groupName	varchar(100), null	Organization, then machine group the machine is assigned to.
ProductName	varchar(128), null	Product name (e.g. Microsoft Office 2000)
ProductVersion	varchar(50), null	Version (e.g. 9.0.3822)
ApplicationName	varchar(128), null	Application name (e.g. Winword.exe)
manufacturer	varchar(128), null	Manufacturers name (e.g. Microsoft Corporation)
ApplicationDesc	varchar(512), null	Description (e.g. Microsoft Word for Windows)
LastModifiedDate	varchar(50), null	File date (e.g. 02/24/2000 17:23:44)
ApplicationSize	int(10), null	File size in bytes (e.g. 8810548)
DirectoryPath	varchar(256), null	Directory path on client desktop (e.g. C:\PROGRA~1\MICROS~4\OFFICE)

---

## vBaseCpuInfo / vCurrCpuInfo

vBaseCpuInfo vCurrCpuInfo	audit results for the CPU in a client desktop machine. One entry per audit of a client desktop.	
Column Name	Type	Purpose
Machine_GroupID	varchar(201), null	A concatenated representation of the machine id and the group id it is associated with.
agentGuid	numeric(26, 0), null	A globally unique identifier for a machine ID.group ID account and its corresponding agent.
machName	varchar(100), null	Machine Name used for each agent
groupName	varchar(100), null	Organization, then machine group the machine is assigned to.
CpuDesc	varchar(80), null	CPU description (e.g. Pentium III Model 8)
CpuSpeed	int(10), null	CPU speed in MHz (e.g. 601)
CpuCount	int(10), null	Number of processors (e.g. 1)
TotalRam	int(10), null	Amount of RAM in MBytes (e.g. 250)

## vBaseDiskInfo / vCurrDiskInfo

vBaseDiskInfo vCurrDiskInfo	audit results for the logical disks found in a client desktop machine. One entry per logical disk from an audit of a client desktop.	
Column Name	Type	Purpose
Machine_GroupID	varchar(201), null	A concatenated representation of the machine id and the group id it is associated with.
agentGuid	numeric(26,0), null	A globally unique identifier for a machine ID.group ID account and its corresponding agent.
machName	varchar(100), null	Machine Name used for each agent
groupName	varchar(100), null	Organization, then machine group the machine is assigned to.
DriveLetter	varchar(100), null	Logical disk drive letter (e.g. C)
TotalSpace	int(10), null	Total MBytes on the disk (e.g. 28609 for 28.609 GB) May be null if unavailable.
UsedSpace	int(10), null	Number of MBytes used (e.g. 21406 for 21.406 GB). May be null if unavailable.
FreeSpace	int(10), null	Number of MBytes free (e.g. 21406 for 21.406 GB). May be null if unavailable.
DriveType	varchar(40), null	Fixed = hard diskRemovable = floppy or other removable mediaCDROMNetwork = mapped network drive
VolumeName	varchar(100), null	Name assigned to the volume
FormatType	varchar(16), null	NTFS, FAT32, CDFS, etc.

## vBaseDriveManufacturer / vCurrDriveManufacturer

vBaseDriveManufacturer vCurrDriveManufacturer	Hardware audit results for the IDE & SCSI drives manufacturer and product info found in a client desktop machine. One entry per drive from an audit of a client desktop.	
Column Name	Type	Purpose
Machine_GroupID	varchar(201), null	A concatenated representation of the machine id and the group id it is associated with.
agentGuid	numeric(26,0), null	A globally unique identifier for a machine ID.group ID account and its corresponding agent.
DriveManufacturer	varchar(100), null	Manufacturer name (data currently has 8 characters max)
DriveProductName	varchar(100), null	Product identification (data currently has 16 characters max)
DriveProductRevision	varchar(40), null	Product revision (data currently has 4 characters max)
DriveType	varchar(9), not null	Type of disk drive found

## vBasePciInfo / vCurrPciInfo

Column Name	Type	Purpose
Machine_GroupID	varchar(201), null	A concatenated representation of the machine id and the group id it is associated with.
agentGuid	numeric(26, 0), null	A globally unique identifier for a machine ID.group ID account and its corresponding agent.
machName	varchar(100), null	Machine Name used for each agent
groupName	varchar(100), null	Organization, then machine group the machine is assigned to.
VendorName	varchar(200), null	PCI Vendor Name
ProductName	varchar(200), null	PCI Product Name
ProductRevision	int(10), null	Product revision
PciBaseClass	int(10), null	PCI base class number
PciSubClass	int(10), null	PCI subclass number
PciBusNumber	int(10), null	PCI bus number
PciSlotNumber	int(10), null	PCI slot number

## vBasePrinterInfo / vCurrPrinterInfo

Column Name	Type	Purpose
Machine_GroupID	varchar(201), null	A concatenated representation of the machine id and the group id it is associated with.
agentGuid	numeric(26, 0), null	A globally unique identifier for a machine ID.group ID account and its corresponding agent.
machName	varchar(100), null	Machine Name used for each agent
groupName	varchar(100), null	Organization, then machine group the machine is assigned to.
PrinterName	varchar(100), null	Name given to the printer. Same as shown in the Control Panels printer configuration window.
PortName	varchar(100), null	Name of the port to which the printer is attached. Same as shown in the Control Panels printer configuration window.
PrinterModel	varchar(100), null	Model name is the driver name retrieved from the printer information.

## vCollectionMember

vCollectionMember		Lists all collections each machine ID is a member of (if any).
Column Name	Type	Purpose
Machine_GroupID	varchar(201), null	A concatenated representation of the machine id and the group id it is associated with.
agentGuid	numeric(26, 0), not null	A globally unique identifier for a machine ID.group ID account and its corresponding agent.
machName	varchar(100), null	Machine Name used for each agent
groupName	varchar(100), null	Organization, then machine group the machine is assigned to.
collectionName	varchar(100), not null	Collection Name

## vConfigLog

vConfigLog		Log of all configuration changes. One entry per change.
Column Name	Type	Purpose
Machine_GroupID	varchar(201), null	A concatenated representation of the machine id and the group id it is associated with.
agentGuid	numeric(26, 0), null	A globally unique identifier for a machine ID.group ID account and its corresponding agent.
machName	varchar(100), null	Machine Name used for each agent
groupName	varchar(100), null	Group Name used for each agent
EventTime	datetime(3), null	Time stamp string representing the time the change was entered. (note: timestamp type was picked to force times into the database as year-month-day-hr-min-sec all in numeric format independent of the format sent in the SQL command. This allows records to be easily sorted by time during retrieval.)
ConfigDesc	varchar(1000), null	Description of the change

## vEventDetail

vEventDetail		Provides a description of an event.
Column Name	Type	Purpose
PartitionId	numeric(26,0), not null	Tenant identifier
EventTypeDesc	varchar(256), not null	Description

**vEventDetail**

IntervalTypeDesc	varchar(50), not null	Interval type ID
EventDesc	varchar(256), not null	Description
EventEndpoint	varchar(770), not null	The endpoint name to dispatch
Data	varchar(-1), null	Data payload
DataFileSpec	varchar(200), null	File path to pass along (if any)
EffectiveDate	datetime(3), not null	Date event was first introduced
ExpirationDate	datetime(3), null	Expiration date (if any)
IntervalIncrement	int(10), null	Increment integer
CreateOwnerCalendarEntries	bit, null	If 1, create a full year's worth of scheduling information, starting from the first run date, in the Hermes.EventInstance table. If 0, do not create this scheduling instance.
NotifyOwnerOnStartAndCompletion	bit, not null	Boolean notification flag (future use)
NotifySubscribersOnCompletion	bit, not null	Boolean notification flag (future use)
OwnerUserName	varchar(50), null	User Name
OwnerCoveredPassword	varchar(50), null	Covered PW (future use)
StartNotificationNote	varchar(100), null	Notification note (future use)
CompletionNotificationNote	varchar(100), null	Completion note (future use)
SuspenseIntervalTypeID	int(10), null	Suspense interval type as specified in interval type ID table
SuspenseIntervalIncrement	int(10), null	Suspense interval increment
SuspenseExpirationEventID	int(10), null	Upon suspense expiration which event to dispatch (future use)
SuspenseExpirationNote	varchar(100), null	Suspense expiration note (future use)
ErrorEventID	int(10), null	Upon error, which event to dispatch (future use)
ErrorNote	varchar(100), null	Error note (future use)
PreparationEventID	int(10), null	(future use)
PreparationEventData	varchar(200), null	(future use)
CalendarEntriesAllowed	bit, not null	Should year? instance creation be allowed
DefaultEventEndpoint	varchar(770), not null	Default endpoint name
OwnerNotificationAllowed	bit, not null	Notification bit for owner
SubscriberNotificationAllowed	bit, not null	Notification bit for subscriber
SysMinIncrement	int(10), not null	Run count (number of times)
SysMaxIncrement	int(10), not null	Recurrence in seconds
MinIncrement	int(10), not null	Minimum increment
MaxIncrement	int(10), not null	Maximum increment
EventId	int(10), not null	Unique event type ID
Active	bit, not null	Is active bit
RunCount	int(10), null	Run count (number of times)
ScriptId	int(10), null	script ID linking to agent procedures

AgentGuid	numeric(26,0), null	Unique 26 digit random number identifying this agent. Master record stored in machNameTab.
orgCalendarScheduleId	numeric(26,0), null	Associated ID in orgCalendarSchedule

## vEventInstanceDetail

Column Name	Type	Purpose
vEventInstanceDetail Provides a description of an event instance that was triggered.		
PartitionId	numeric(26,0), not null	Tenant identifier
ScheduledDate	datetime(3), not null	Date/time instance was scheduled
StartedDate	datetime(3), null	Date/time instance was started (running)
CompletedDate	datetime(3), null	Date/time instance completed running
InProcess	bit, not null	If event is running (in progress)
CompletedWithErrors	bit, not null	If completed with errors
EventTypeDesc	varchar(256), not null	Description
IntervalTypeDesc	varchar(50), not null	Interval type ID
EventDesc	varchar(256), not null	Description
EventEndpoint	varchar(770), not null	The endpoing name to dispatch
Data	varchar(-1), null	Data payload
DataFileSpec	varchar(200), null	File path to pass along (if any)
EffectiveDate	datetime(3), not null	Date event was first introduced
ExpirationDate	datetime(3), null	Expiration date (if any)
IntervalIncrement	int(10), null	Increment integer
CreateOwnerCalendarEntries	bit, null	Boolean if year? worth of instances are forward created or not
NotifyOwnerOnStartAndCompletion	bit, not null	Boolean notification flag (future use)
NotifySubscribersOnCompletion	bit, not null	Boolean notification flag (future use)
OwnerUserName	varchar(50), null	User Name
OwnerCoveredPassword	varchar(50), null	Covered PW (future use)
StartNotificationNote	varchar(100), null	Notification note (future use)
CompletionNotificationNote	varchar(100), null	Completion note (future use)
SuspenseIntervalTypeID	int(10), null	Suspense interval type as specified in interval type ID table
SuspenseIntervalIncrement	int(10), null	Suspense interval increment
SuspenseExpirationEventID	int(10), null	Upon suspense expiration which event to dispatch (future use)
SuspenseExpirationNote	varchar(100), null	Suspense expiration note (future use)

## vEventInstanceHistoryDetail

ErrorEventID	int(10), null	Upon error, which event to dispatch (future use)
ErrorNote	varchar(100), null	Error note (future use)
PreparationEventID	int(10), null	(future use)
PreparationEventData	varchar(200), null	(future use)
EventInstanceID	numeric(18,0), not null	Event instance unique ID
SuspenseDate	datetime(3), null	Event suspense date
CalendarEntriesAllowed	bit, not null	Should year? instance creation be allowed
DefaultEventEndpoint	varchar(770), not null	Default endpoint name
OwnerNotificationAllowed	bit, not null	Notification bit for owner
SubscriberNotificationAllowed	bit, not null	Notification bit for subscriber
SysMinIncrement	int(10), not null	Minimum increment
SysMaxIncrement	int(10), not null	Maximum increment
EventId	int(10), not null	Unique event type ID
Active	bit, not null	Is active bit
ErrorMessage	varchar(500), null	Error message (if any)
InstanceData	varchar(-1), null	Data payload
ConfiguredRunCount	int(10), null	Run count (number of times)
CurrentRunCount	int(10), null	Run count (number of times)
InstanceRunCount	int(10), null	Run count (number of times)
ScriptId	int(10), null	script ID linking to agent procedures
AgentGuid	numeric(26,0), null	Unique 26 digit random number identifying this agent. Master record stored in machNameTab.
powerUpIfOffline	char(1), null	If true, machine is powered up
skipIfOffline	char(1), null	If true, machine is skipped if offline
runAfterNextReboot	char(1), null	If true, run after reboot
orgCalendarScheduleId	numeric(26,0), null	Associated ID in orgCalendarSchedule

## vEventInstanceHistoryDetail

vEventInstanceHistoryDetail Provides a history of event instances that were triggered.

Column Name	Type	Purpose
PartitionId	numeric(26,0), null	Tenant identifier
ScheduledDate	datetime(3), null	Date/time instance was scheduled
StartedDate	datetime(3), null	Date/time instance was started (running)
CompletedDate	datetime(3), null	Date/time instance completed running
InProcess	int(10), not null	If event is running (in progress)
CompletedWithErrors	bit, null	If completed with errors
EventTypeDesc	varchar(256), not null	Description



IntervalTypeDesc	varchar(50), not null	Interval type ID
EventDesc	varchar(256), not null	Description
EventEndpoint	varchar(770), not null	The endpoint name to dispatch
Data	varchar(-1), null	Data payload
DataFileSpec	varchar(200), null	File path to pass along (if any)
EffectiveDate	datetime(3), not null	Date event was first introduced
ExpirationDate	datetime(3), null	Expiration date (if any)
IntervalIncrement	int(10), null	Increment integer
CreateOwnerCalendarEntries	bit, null	Boolean if year? worth of instances are forward created or not
NotifyOwnerOnStartAndCompletion	bit, not null	Boolean notification flag (future use)
NotifySubscribersOnCompletion	bit, not null	Boolean notification flag (future use)
OwnerUserName	varchar(50), null	User Name
OwnerCoveredPassword	varchar(50), null	Covered password (future use)
StartNotificationNote	varchar(100), null	Notification note (future use)
CompletionNotificationNote	varchar(100), null	Completion note (future use)
SuspenseIntervalTypeID	int(10), null	Suspense interval type as specified in interval type ID table
SuspenseIntervalIncrement	int(10), null	Suspense interval increment
SuspenseExpirationEventID	int(10), null	Upon suspense expiration which event to dispatch (future use)
SuspenseExpirationNote	varchar(100), null	Suspense expiration note (future use)
ErrorEventID	int(10), null	Upon error, which event to dispatch (future use)
ErrorNote	varchar(100), null	Error note (future use)
PreparationEventID	int(10), null	(future use)
PreparationEventData	varchar(200), null	(future use)
EventInstanceID	numeric(18,0), null	Event instance unique ID
SuspenseDate	datetime(3), null	Event suspense date
CalendarEntriesAllowed	bit, not null	Should year? instance creation be allowed
DefaultEventEndpoint	varchar(770), not null	Default endpoint name
OwnerNotificationAllowed	bit, not null	Notification bit for owner
SubscriberNotificationAllowed	bit, not null	Notification bit for subscriber
SysMinIncrement	int(10), not null	Minimum increment
SysMaxIncrement	int(10), not null	Maximum increment
EventId	int(10), not null	Unique event type ID
Active	bit, not null	Is active bit
ErrorMessage	varchar(500), null	Error message (if any)
InstanceData	varchar(-1), null	Data payload
ConfiguredRunCount	int(10), null	Run count (number of times)
CurrentRunCount	int(10), null	Run count (number of times)

## vLicenseInfo

InstanceRunCount	int(10), null	Run count (number of times)
ScriptId	int(10), null	script ID linking to agent procedures
AgentGuid	numeric(26,0), null	Unique 26 digit random number identifying this agent. Master record stored in machNameTab.
orgCalendarScheduleId	numeric(26,0), null	Associated ID in orgCalendarSchedule

## vLicenseInfo

vLicenseInfo		
License information collected during audit.		
Column Name	Type	Purpose
Machine_GroupID	varchar(201), null	A concatenated representation of the machine id and the group id it is associated with.
agentGuid	numeric(26,0), null	A globally unique identifier for a machine ID.group ID account and its corresponding agent.
computerName	varchar(80), null	holds the computer name found in the OS
groupName	varchar(100), null	Organization, then machine group the machine is assigned to.
Publisher	varchar(100), null	software publisher (usually in the Publisher reg value)
ProductName	varchar(100), null	Software title (usually in DisplayName value but may be the reg key title)
LicenseCode	varchar(100), null	License code (usually in the ProductID value)
ProductKey	varchar(100), null	Product key
LicenseVersion	varchar(100), null	version string returned by the scanner (if any)
InstallDate	varchar(100), null	install date string returned by the scanner (if any)
OperatingSystem	varchar(16), null	Operating system of the computer
OperatingSystemVersion	varchar(150), null	Operating system version information.
loginName	varchar(100), null	Current user logged on.
lastLoginName	varchar(100), null	Previous user logged on.

## vMachine

vMachine		
The information known about each client desktop machine.		
Column Name	Type	Purpose

Machine_GroupID	varchar(201), null	A concatenated representation of the machine id and the group id it is associated with.
agentGuid	numeric(26,0), not null	A globally unique identifier for a machine ID.group ID account and its corresponding agent.
machName	varchar(100), null	full machine name. Everything to the left of the left most decimal point is the machine name.
groupName	varchar(100), null	Organization, then machine group the machine is assigned to.
Manufacturer	varchar(100), null	Manufacturer string (type 1)
ProductName	varchar(100), null	Product Name string (type 1)
MachineVersion	varchar(100), null	Version string (type 1)
SysSerialNumber	varchar(100), null	Serial Number string (type 1)
ChassisSerialNumber	varchar(100), null	Chassis Serial Number (type 3)
ChassisAssetTag	varchar(100), null	Chassis Asset Tag number (type 3)
BusSpeed	varchar(100), null	External Bus Speed (in MHz) (type 4)
MaxMemorySize	varchar(100), null	Maximum Memory Module Size (in MB) (type 16 - Maximum Capacity or if type 16 not available, Maximum Memory Module Size type 5)
MaxMemorySlots	varchar(100), null	Number of Associated Memory Slots (Number of Memory Devices in type 16 or if type 16 not available Number of Associated Memory Slots in type 5)
ChassisManufacturer	varchar(100), null	Chassis Manufacturer (type 3)
ChassisType	varchar(100), null	Chassis Type (type 3)
ChassisVersion	varchar(100), null	Chassis Ver (type 3)
MotherboardManufacturer	varchar(100), null	Motherboard Manufacturer (type 2)
MotherboardProductCode	varchar(100), null	Motherboard Product Code (type 2)
MotherboardVersion	varchar(100), null	Motherboard Version (type 2)
MotherboardSerialNumber	varchar(100), null	Motherboard Serial Number (type 2)
ComputerName	varchar(80), null	holds the computer name found in the OS
IpAddress	varchar(20), null	IP Address of the computer in a.b.c.d notation
SubnetMask	varchar(20), null	Subnet mask in a.b.c.d notation. String is empty if data is unavailable
DefaultGateway	varchar(20), null	Default gateway IP address in a.b.c.d notation. String is empty if data is unavailable.
DnsServer1	varchar(20), null	DNS server #1s IP address in a.b.c.d notation. String is empty if

## vMachine

	null	data is unavailable.
DnsServer2	varchar(20), null	DNS server #2s IP address in a.b.c.d notation. String is empty if data is unavailable.
DnsServer3	varchar(20), null	DNS server #3s IP address in a.b.c.d notation. String is empty if data is unavailable.
DnsServer4	varchar(20), null	DNS server #4s IP address in a.b.c.d notation. String is empty if data is unavailable.
DhcpEnabled	int(10), null	0 -> Data is unavailable 1 -> DHCP on client computer is enabled 2 -> Disabled
DhcpServer	varchar(20), null	DHCP servers IP address in a.b.c.d notation. String is empty if data is unavailable.
WinsEnabled	int(10), null	0 -> Data is unavailable 1 -> WINS resolution on client computer is enabled 2 -> Disabled
PrimaryWinsServer	varchar(20), null	Primary WINS servers IP address in a.b.c.d notation. String is empty if unavailable.
SecondaryWinsServer	varchar(20), null	Secondary WINS servers IP address in a.b.c.d notation. String is empty if unavailable.
ConnectionGatewayIp	varchar(20), null	IP Address in a.b.c.d notation obtained by the Kaseya Server as the source address of the Agent. This IP is the Agents network gateway and will be different from the IpAddress if the computer is behind NAT for example. String is empty if unavailable.
ipv6Address	varchar(40), null	The ipv6 address. Null, if no address is provided.
OsType	varchar(8), null	String contains OS type, such as NT4, 2000, NT3.51, or WIN32s. Derived from portions of MajorVersion, MinorVersion, and PlatformId.
OsInfo	varchar(150), null	String contains additional OS info, such as Build 1381 Service Pack 3. Derived from portions of BuildNumber and CsdVersion.
MajorVersion	int(10), null	Major version number from GetVersionEx() Windows function call.
MinorVersion	int(10), null	Minor version number from GetVersionEx() Windows function call. If PlatformId is Win32 for Windows, then a 0 MinorVersion indicates Windows 95. If PlatformId is Win32 for Windows, then then a MinorVersion > 0 indicates Windows 98.
MacAddr	varchar(40), null	String containing the physical address, i.e. the Media Access Control address, of the connection. A MAC address has the form of: 00-03- 47-12-65-77
LoginName	varchar(100), null	User name of the currently logged on user. This value is updated with every quick check in. The agent error log file is updated with each change.
timezoneOffset	int(10), not null	The timezone offset for the agent as compared to universal time.
agentInstGuid	varchar(40), not null	The unique portion of the path to the K2 (v6.0.0.0 and above) agent directory and to the service name as KA+vMachine.agentInstGuid.

# vMonitorAlarmAlert

vMonitorAlarmAlert		
Listing of all alarms created by monitor alerts.		
Column Name	Type	Purpose
Machine_GroupID	varchar(201), null	A concatenated representation of the machine id and the group id it is associated with
agentGuid	numeric(26, 0), null	A globally unique identifier for a machine ID.group ID account and its corresponding agent.
MachineName	varchar(100), null	Machine Name used for each agent
GroupName	varchar(100), null	Organization, then machine group the machine is assigned to.
MonitorAlarmID	int(10), not null	unique monitor alarm number
MonitorType	tinyint(3), not null	4 -> Monitor alert
EventLogType	int(10), null	Only applies to AlertType=6 (NT Event Log) 0 -> Application Event Log 1 -> System Event Log 2 -> Security Event Log
AlarmType	smallint(5), null	0 -> Alarm 1 -> Trending
AlertType	int(10), not null	Alerts are one of several monitor types. 1 - Admin account disabled 2 - Get File change alert 3 - New Agent checked in for the first time 4 - Application has been installed or deleted 5 - Agent Procedure failure detected 6 - NT Event Log error detected 7 - Kaseya Server stopped 8 - Protection violation detected. 9 - PCI configuration has been changed 10 - Disk drive configuration change 11 - RAM size changed. 12 - Test email sent by serverInfo.asp 13 - Scheduled report completed 14 - Network scan alert type 15 - agent offline 16 - low on disk space 17 - disabled remote control 18 - agent online 19 - new patch found 20 - patch path missing 21 - patch install failed 23 - Backup Alert
Message	varchar(3000), null	Message created from alarm, email message body
AlarmSubject	varchar(500), null	Subject of alarm and email subject
AlarmEmail	varchar(1000), null	Email Address(es) alarm is sent to
EventTime	datetime(3), not null	Date and Time of alarm

## vMonitorAlarmCounter

TicketID	varchar(30), null	Ticket ID created from alarm
MonitorAlarmState	smallint(5), null	0 -> Stopped 1 -> Running
AdminName	varchar(100), null	User who assigned monitor alert to machine

---

## vMonitorAlarmCounter

vMonitorAlarmCounter		Listing of all alarms created by monitor counters.
Column Name	Type	Purpose
Machine_GroupID	varchar(201), null	A concatenated representation of the machine id and the group id it is associated with
agentGuid	numeric(26, 0), null	A globally unique identifier for a machine ID.group ID account and its corresponding agent.
MachineName	varchar(100), null	Machine Name used for each agent
GroupName	varchar(100), null	Organization, then machine group the machine is assigned to.
MonitorAlarmID	int(10), not null	unique monitor alarm number
MonitorType	tinyint(3), not null	0 -> Monitor Counter
MonitorName	varchar(100), not null	Name of monitor counter object
AlarmType	smallint(5), null	0 -> Alarm 1 -> Trending
Message	varchar(3000), null	Message created from alarm, email message body
AlarmSubject	varchar(500), null	Subject of alarm and email subject
AlarmEmail	varchar(1000), null	Email Address(es) alarm is sent to
EventTime	datetime(3), not null	Date and Time of alarm
TicketID	varchar(30), null	Ticket ID created from alarm
LogValue	float(53), null	Value causing alarm
MonitorAlarmState	smallint(5), null	0 -> Stopped 1 -> Running
AdminName	varchar(100), null	User who assigned monitor counter to machine

## vMonitorAlarmProcess

vMonitorAlarmProcess		Listing of all alarms created by monitor processes.
Column Name	Type	Purpose
Machine_GroupID	varchar(201), null	A concatenated representation of the machine id and the group id it is associated with
agentGuid	numeric(26, 0), null	A globally unique identifier for a machine ID.group ID account and its corresponding agent.
MachineName	varchar(100), null	Machine Name used for each agent
GroupName	varchar(100), null	Organization, then machine group the machine is assigned to.
MonitorAlarmID	int(10), not null	unique monitor alarm number
MonitorType	tinyint(3), not null	2 -> Monitor Process
MonitorName	varchar(100), not null	Name of monitor process object
AlarmType	smallint(5), null	0 -> Alarm 1 -> Trending
Message	varchar(3000), null	Message created from alarm, email message body
AlarmSubject	varchar(500), null	Subject of alarm and email subject
AlarmEmail	varchar(1000), null	Email Address(es) alarm is sent to
EventTime	datetime(3), not null	Date and Time of alarm
TicketID	varchar(30), null	Ticket ID created from alarm
LogValue	float(53), null	Value causing alarm, below are process values:
MonitorAlarmState	smallint(5), null	0 -> Stopped 1 -> Running
AdminName	varchar(100), null	Username of the administrator.

## vMonitorAlarmService

vMonitorAlarmService		Listing of all of the alarms created by monitor services.
Column Name	Type	Purpose
Machine_GroupID	varchar(201), null	A concatenated representation of the machine id and the group id it is associated with.
agentGuid	numeric(26, 0), null	A unique identifier for a machine ID.group ID account and its corresponding agent.
MachineName	varchar(100)	Machine Name used for each agent

## vMonitorAlarmSNMP

	, null	
GroupName	varchar(100), null	Organization, then machine group the machine is assigned to.
MonitorAlarmID	int(10), not null	unique monitor alarm number
MonitorType	tinyint(3), not null	0 -> Monitor Service
MonitorName	varchar(100), not null	Name of monitor service object
AlarmType	smallint(5), null	0 -> Alarm 1 -> Trending
Message	varchar(3000), null	Message created from alarm, email message body
AlarmSubject	varchar(500), null	Subject of alarm and email subject
AlarmEmail	varchar(1000), null	Email Address(es) alarm is sent to
EventTime	datetime(3), not null	Date and Time of alarm
TicketID	varchar(30), null	Ticket ID created from alarm
LogValue	float(53), null	Value causing alarm, below are service values: -1 -> Does not exist 0 -> Reserved 1 -> Stopped 2 -> Start Pending 3 -> Stop Pending 4 -> Running 5 -> Continue Pending 6 -> Pause Pending 7 -> Paused
MonitorAlarmState	smallint(5), null	0 -> Stopped 1 -> Running
AdminName	varchar(100), null	User who assigned monitor service to machine

---

## vMonitorAlarmSNMP

vMonitorAlarmSNMP		Listing of all alarms created by monitor SNMP Get objects.
Column Name	Type	Purpose
Machine_GroupID	varchar(201), null	A concatenated representation of the machine id and the group id it is associated with
agentGuid	numeric(26, 0), null	A globally unique identifier for a machine ID.group ID account and its corresponding agent.
MachineName	varchar(100), null	Machine Name used for each agent
GroupName	varchar(100)	Organization, then machine group the machine is assigned to.



	, null	
MonitorAlarmID	int(10), not null	unique monitor alarm number
MonitorType	tinyint(3), not null	3 -> Monitor SNMP Get
MonitorName	varchar(100), not null	Name of monitor SNMP Get object
AlarmType	smallint(5), null	0 -> Alarm 1 -> Trending
Message	varchar(3000), null	Message created from alarm, email message body
AlarmSubject	varchar(500), null	Subject of alarm and email subject
AlarmEmail	varchar(1000), null	Email Address(es) alarm is sent to
EventTime	datetime(3), not null	Date and Time of alarm
TicketID	varchar(30), null	Ticket ID created from alarm
LogValue	float(53), null	Value causing alarm, if the return value of the SNMP Object Get command is a string the value will be the the Message
SNMPName	varchar(50), null	Name returned from SNMP Device on scan
SNMPCustomName	nvarchar(100), null	Custom name for SNMP Device
MonitorAlarmState	smallint(5), null	0 -> Stopped 1 -> Running
AdminName	varchar(100), null	User who assigned monitor SNMP Get to machine

---

## vMonitorAlarmSystemCheck

vMonitorAlarmSystemCheck	Listing of all alarms created by monitor system checks.	
Column Name	Type	Purpose
Machine_GroupID	varchar(201), null	A concatenated representation of the machine id and the group id it is associated with
agentGuid	numeric(26, 0), null	A globally unique identifier for a machine ID.group ID account and its corresponding agent.
MachineName	varchar(100), null	Machine Name used for each agent
GroupName	varchar(100), null	Organization, then machine group the machine is assigned to.
MonitorAlarmID	int(10), not null	unique monitor alarm number
MonitorType	tinyint(3), not null	5 -> Monitor system check

## vNetStatsLog

SystemCheckType	int(10), null	1 -> Web Server 2 -> DNS Server 4 -> Port Connection 5 -> Ping 6 -> Custom
AlarmType	smallint(5), null	0 -> Alarm 1 -> Trending
Parameter1	varchar(1000), null	First parameter used in system check
Parameter2	varchar(1000), null	(Optional) Second parameter used by system check
Message	varchar(3000), null	Message created from alarm, email message body
AlertSubject	varchar(500), null	Subject of alarm and email subject
AlarmEmail	varchar(1000), null	Email Address(es) alarm is sent to
EventTime	datetime(3), not null	Date and Time of alarm
TicketID	varchar(30), null	Ticket ID created from alarm
MonitorAlarmState	smallint(5), null	0 -> Stopped 1 -> Running
AdminName	varchar(100), null	User who assigned of monitor counter to machine

---

## vNetStatsLog

vNetStatsLog	network statistics log from the Agent	
Column Name	Type	Purpose
Machine_GroupID	varchar(201), null	A concatenated representation of the machine id and the group id it is associated with.
agentGuid	numeric(26, 0), null	A globally unique identifier for a machine ID.group ID account and its corresponding agent.
machName	varchar(100), null	Machine Name used for each agent
groupName	varchar(100), null	Organization, then machine group the machine is assigned to.
EventTime	datetime(3), null	Time stamp string representing the time the change was entered. (note: timestamp type was picked to force times into the database as year-month-day-hr-min-sec all in numeric format independent of the format sent in the SQL command. This allows records to be easily sorted by time during retrieval.)
BytesRcvd	int(10), null	Number of bytes received during this statistics period
BytesSent	int(10), null	Number of bytes sent during this statistics period
ApplicationName	varchar(800), null	Application name using the network

## vNtEventLog

vNtEventLog		Event log data collected from each managed machine
Column Name	Type	Purpose
Machine_GroupID	varchar(201), null	A concatenated representation of the machine id and the group id it is associated with.
agentGuid	numeric(26, 0), null	A globally unique identifier for a machine ID.group ID account and its corresponding agent.
machName	varchar(100), null	Machine Name used for each agent
groupName	varchar(100), null	Organization, then machine group the machine is assigned to.
logType	int(10), null	1 -> Application Log 2 -> Security Log 3 -> System Log
eventType	int(10), null	1 -> Error 2 -> Warning 4 -> Informational 8 -> Success Audit 16 -> Failure Audit
eventTime	datetime(3), null	Time the event occurred
ApplicationName	nvarchar(200), null	event log source
EventCategory	nvarchar(200), null	event log category
eventId	int(10), null	event log event ID
username	nvarchar(200), null	event log user
computerName	nvarchar(200), null	event log computer name
EventMessage	nvarchar(2000), null	event log message

## vOnBoardDeviceInfo

vOnBoardDeviceInfo		Data collected by KaSmBios.exe during an audit for on-board device information. There is one row per active slot. All information is retrieved from Type 10.
Column Name	Type	Purpose
Machine_GroupID	varchar(201), null	A concatenated representation of the machine id and the group id it is associated with.
agentGuid	numeric(26, 0), null	A globally unique identifier for a machine ID.group ID account and its corresponding agent.

## vPatchApprovalPolicyStatus

machName	varchar(100), null	Machine Name used for each agent
groupName	varchar(100), null	Organization, then machine group the machine is assigned to.
DeviceType	varchar(100), null	Device Type
DeviceDesc	varchar(100), null	Device Description

# vPatchApprovalPolicyStatus

vPatchApprovalPolicyStat  
us The patch approval status of a patch by patch policy.

Column Name	Type	Purpose
UpdateClassificationCode	smallint(5), not null	Update classification: 100 -> Security Update – Critical 101 -> Security Update – Important 102 -> Security Update – Moderate 103 -> Security Update – Low 104 -> Security Update – Unrated 110 -> Critical Update 120 -> Update Rollup 200 -> Service Pack 210 -> Update 220 -> Feature Pack 230 -> Tool 900 -> Unclassified 999 -> Kaseya Patch Test
UpdateClassification	varchar(43), not null	Same as UpdateClassification in string format.
Approved	int(10), null	Number of patch policies in which this patch is approved
Denied	int(10), null	Number of patch policies in which this patch is denied
Pending	int(10), null	Number of patch policies in which this patch is pending
Totals	int(10), null	Total number of patch policies in which this patch is approved, denied or pending
Product	varchar(300), null	Product to which patch is associated
Policy	varchar(100), null	Patch Policy Name
UpdateClassificationDefaultApprovalCode	smallint(5), not null	0 – Approved 1 - Denied 2 - Pending
UpdateClassificationDefaultApproval	varchar(8), not null	Approved, Pending, Denied
ProductDefaultApprovalCode	smallint(5), not null	0 – Approved 1 - Denied 2 - Pending
ProductDefaultApproval	varchar(8), not null	Approved, Pending, Denied
partitionId	numeric(26,0), not	Tenant identifier (see partnerPartition table)

null

## vPatchApprovalStatus

vPatchApprovalStatus		
Column Name	Type	Purpose
Show the approval status of a patch. There is one row for each active patch.		
patchDataId	int(10), not null	Unique identifier for this patch within the database
KBArticle	varchar(12), not null	Microsoft knowledge base article number
SecurityBulletin	varchar(40), not null	Microsoft security bulleting number
Title	varchar(250), not null	Patch title
UpdateClassificationId	smallint(5), not null	Numeric representation of the patch update classification; included to make filtering easier; Values are: 100 = Critical Security Update (High Priority) 101 = Important Security Update (High Priority) 102 = Moderate Security Update (High Priority) 103 = Low Security Update (High Priority) 104 = Non-rated Security Update (High Priority) 110 = Critical Update (High Priority) 120 = Update Rollup (High Priority) 200 = Service Pack (Optional) 210 = Update (Optional) 220 = Feature Pack (Optional) 230 = Tool (Optional)
UpdateClassification	varchar(43), not null	Textual representation of the patch update classification
Product	varchar(300), null	Product this to which this patch is associated
PublishedDate	datetime(3), null	Date that this patch was last update by Microsoft, if available
Language	varchar(30), not null	Language support for the patch
numApproved	int(10), null	Number of patch policies in which this patch is approved
numDenied	int(10), null	Number of patch policies in which this patch is denied
numPending	int(10), null	Number of patch policies in which this patch is pending approval
InstallationWarning	varchar(27), not null	Returns 'Manual Install Only', 'Windows Update Only', 'Product Upgrade Only', or an empty string.
partitionId	numeric(26, 0),not null	The unique tenant partition identifier for a shared Kaseya Server and database.

# vPatchConfiguration

vPatchConfiguration		
Column Name	Type	Purpose
Provides the various patch-related configurations. There is one row per machine.		
agentGuid	numeric(26, 0), not null	A globally unique identifier for a machine ID.group ID account and its corresponding agent.
MachineID	varchar(201), null	The machine name, machine group and organization assigned to a machine.
Machine_GroupID	varchar(201), null	A concatenated representation of the machine id and the group id it is associated with.
MachineName	varchar(80), null	Machine Name used for each agent
ComputerName	varchar(80), null	holds the computer name found in the OS
ReverseGroupName	varchar(100), null	Machine group, then organization the machine is assigned to.
GroupName	varchar(100), not null	Organization, then machine group the machine is assigned to.
OperatingSystem	varchar(16), null	Operating system of the computer.
OSInformation	varchar(150), null	Operating system information.
CurrentUser	varchar(100), null	Currently logged on user.
LastLoggedOnUser	varchar(100), null	Previously logged on user.
PatchScanTypeSetting	int(10), not null	Type of patch scan: -1 = OS not supported for patch scans 0 = Legacy Patch Scan 1 = WUA Patch Scan (32-bit) 2 = WUA Patch Scan (64-bit)
PatchScanType	varchar(300), null	Type of patch scan description
RebootSetting	int(10), not null	Post patch installation reboot action: 0 = Reboot immediately 1 = Ask - Do nothing if user does not respond in <RebootWarnMinutes> minutes 2 = Do not reboot after update; If exists, send email to <RebootWarningEmailAddress> 3 = Ask - Reboot if user does not respond in <RebootWarnMinutes> minutes 4 = Warn user that machine will reboot in <RebootWarnMinutes> minutes 5 = Skip reboot if user logged in 6 = Reboot on <RebootDay> at <RebootTime> after install 7 = Ask to reboot every <RebootWarnMinutes> minutes
RebootAction	varchar(143), null	Post patch installation reboot action description
PreRebootScript	varchar(260)	scriptId of script to execute immediately before the reboot step in the

	, not null	Patch Reboot script
PostRebootScript	varchar(260) , not null	scriptId of script to execute immediately after the patch reboot (from scriptAssignmentReboot)
RebootWarnMinutes	int(10), null	Warning wait period in minutes for RebootSetting 1,3,4,7
RebootDay	int(10), null	Day to force patch reboot for RebootSetting 6: 0 = Everyday 1 = Sunday 2 = Monday 3 = Tuesday 4 = Wednesday 5 = Thursday 6 = Friday 7 = Saturday
RebootTime	varchar(10), null	Time to force patch reboot for RebootSetting 6
RebootWarningEmailAddress	varchar(100) , null	Email address to send email for post patch installation reboot for RebootSetting 2
FileSourceSetting	int(10), not null	Patch installation file source: 0 = From Internet 1 = From system server 2 = From file server
FileSourceConfig	varchar(169) , not null	Patch installation file source description
UseAgentTempDirOnDriveMostFreeSpace	int(10), not null	Destination for downloaded patch file: 0 = Use configured Agent working drive/directory 1 = Use configured Agent working directory on local disk drive having most free space
DeleteAfterInstall	int(10), not null	Delete downloaded patch file after installation: 0 = Do not delete 1 = Delete
FileSourceMachineId	varchar(201) , null	MachineGroup_ID for the file server for FileSourceSetting 2
FileSourceUNCPath	varchar(300) , null	UNC path for the file server for FileSourceSetting 2
FileSourceLocalPath	varchar(300) , null	Local machine path for the file server for FileSourceSetting 2
LanCacheName	varchar(200) , null	The name of the LAN Cache.
LanCacheMachineId	varchar(201) , null	The machine id of the machine hosting the LAN Cache.
LanCacheUNCPath	varchar(260) , null	The UNC path to the LAN Cache.
LanCacheLocalPath	varchar(260) ,null	The local directory path to the LAN Cache.
UseInternetSourceAsFallback	int(10), null	If file server not accessible, fall back to use the Internet for FileSourceSetting 2

## vPatchPieChartCountsNoPolicy

WinAutoUpdateSetting	int(10), not null	Windows Automatic Update setting 0 = Windows automatic Updates configuration set; Cannot be changed by user on the machine 1 = Windows automatic Updates disabled; Cannot be changed by user on the machine 2 = User control
WinAutoUpdateConfig	varchar(93), null	Windows Automatic Update description

---

## vPatchPieChartCountsNoPolicy

vPatchPieChartCountsNo Policy Provides patch counts for machines without an assign policy.

Column Name	Type	Purpose
Machine_GroupID	varchar(201), null	A concatenated representation of the machine id and the group id to which it is associated
agentGuid	numeric(26,0), not null	Unique 26 digit random number identifying this agent. Master record stored in machNameTab.
Machineld	varchar(201), null	Machine Name used for each agent
ComputerName	varchar(80), null	holds the computer name found in the OS
ReverseGroupName	varchar(100), null	Machine group, then organization the machine is assigned to.
GroupName	varchar(100), not null	Organization, then machine group the machine is assigned to.
OperatingSystem	varchar(16), null	Operating system of the computer.
OSInformation	varchar(150), null	Operating system information
CurrentUser	varchar(100), null	Currently logged on user.
LastLoggedOnUser	varchar(100), null	Previously logged on user.
Category	varchar(26), not null	<ul style="list-style-type: none"><li>• Not Scanned</li><li>• Missing Patches: 0</li><li>• Missing Patches: 1-2</li><li>• Missing Patches: 3-5</li><li>• Missing Patches: 6 or more</li><li>• OS Not Supported</li></ul>

---

## vPatchPieChartCountsUsePolicy

vPatchPieChartCountsUsePolicy Provides patch counts for machines with an assigned policy.

Column Name	Type	Purpose
Machine_GroupID	varchar(201), null	A concatenated representation of the machine id and the group id to which it is associated
agentGuid	numeric(26,0), not null	Unique 26 digit random number identifying this agent. Master record stored in machNameTab.



Machineld	varchar(201), null	Machine Name used for each agent
ComputerName	varchar(80), null	holds the computer name found in the OS
ReverseGroupName	varchar(100), null	Machine group, then organization the machine is assigned to.
GroupName	varchar(100), not null	Organization, then machine group the machine is assigned to.
OperatingSystem	varchar(16), null	Operating system of the computer.
OSInformation	varchar(150), null	Operating system information
CurrentUser	varchar(100), null	Currently logged on user.
LastLoggedOnUser	varchar(100), null	Previously logged on user.
Category	varchar(26), not null	<ul style="list-style-type: none"> <li>• Not Scanned</li> <li>• Missing Patches: 0</li> <li>• Missing Patches: 1-2</li> <li>• Missing Patches: 3-5</li> <li>• Missing Patches: 6 or more</li> <li>• OS Not Supported</li> </ul>

## vPatchPolicy

Column Name	Type	Purpose
vPatchPolicy	Show the approval status of a patch. There is one row for each active patch in each patch policy.	
patchDataId	int(10), not null	Unique identifier for this patch within the database
Policy	varchar(100), null	Name of patch policy
KBArticle	varchar(12), not null	Microsoft knowledge base article number
SecurityBulletin	varchar(40), not null	Microsoft security bulleting number
Title	varchar(250), not null	Patch title
UpdateClassificationId	smallint(5), not null	Numeric representation of the patch update classification; included to make filtering easier; Values are: 100 = Critical Security Update (High Priority) 101 = Important Security Update (High Priority) 102 = Moderate Security Update (High Priority) 103 = Low Security Update (High Priority) 104 = Non-rated Security Update (High Priority) 110 = Critical Update (High Priority) 120 = Update Rollup (High Priority) 200 = Service Pack (Optional) 210 = Update (Optional) 220 = Feature Pack (Optional) 230 = Tool (Optional)
UpdateClassification	varchar(43), not null	Textual representation of the patch update classification

## vPatchPolicyMember

Product	varchar(300), null	Product this to which this patch is associated
PublishedDate	datetime(3), null	Date that this patch was last update by Microsoft, if available
Language	varchar(30), not null	Language support for the patch
ApprovalStatusId	smallint(5), not null	Numeric representation of the patch approval status; included to make filtering easier; Values are: 0 = Approved 1 = Denied 2 = Pending Approval
ApprovalStatus	varchar(16), not null	Textual representation of the patch approval status
Admin	varchar(100), not null	Name of user that made the most recent status change ("System" indicates that the approval status was set by the system based upon patch policy default approval status or by KB Override)
Changed	datetime(3), not null	Timestamp of most recent approval status change
InstallationWarning	varchar(20), not null	Returns 'Manual Install Only', 'Windows Update Only', 'Product Upgrade Only', or an empty string.
StatusNotes	varchar(500), not null	Notes added by Admin concerning the patch approval status
partitionId	numeric(26, 0), not null	The unique tenant partition identifier for a shared Kaseya Server and database.

---

## vPatchPolicyMember

vPatchPolicyMember		
Column Name	Type	Purpose
Machine_GroupID	varchar(201), null	A concatenated representation of the machine id and the group id to which it is associated
agentGuid	numeric(26, 0), not null	A globally unique identifier for a machine ID.group ID account and its corresponding agent
MachineID	varchar(201), null	Machine Name used for each agent
ComputerName	varchar(80), null	holds the computer name found in the OS
ReverseGroupName	varchar(100), null	Machine group, then organization the machine is assigned to.
GroupName	varchar(100), not null	Organization, then machine group the machine is assigned to.
OperatingSystem	varchar(16), null	Operating system of the computer.
OSInformation	varchar(150), null	Operating system information
CurrentUser	varchar(100), null	Currently logged on user.

LastLoggedOnUser	varchar(100), null	Previously logged on user.
PolicyName	varchar(100), not null	Patch Policy Name

## vPatchStatus

Column Name	Type	Purpose
vPatchStatus Shows the state of all patches on a per machine basis. There is one row per patch for each machine.		
Machine_GroupID	varchar(201), null	A concatenated representation of the machine id and the group id it is associated with.
agentGuid	numeric(26, 0), not null	A globally unique identifier for a machine ID.group ID account and its corresponding agent.
Machineld	varchar(201), null	Machine name used for each agent.
ComputerName	varchar(80), null	holds the computer name found in the OS
ReverseGroupName	varchar(100), null	Machine group, then organization the machine is assigned to.
GroupName	varchar(100), not null	Organization, then machine group the machine is assigned to.
OperatingSystem	varchar(16), null	Operating system of the computer.
OSInformation	varchar(150), null	Operating system information.
CurrentUser	varchar(100), null	Currently logged on user.
LastLoggedOnUser	varchar(100), null	Previously logged on user.
KBArticle	varchar(10), not null	Microsoft KB article number reported from the patch scanner.
SecurityBulletin	varchar(40), not null	Bulletin ID string reported from the patch scanner.
Title	varchar(250), not null	Update title.
Product	varchar(300), not null	Product to which patch is associated
Language	varchar(30), null	Language of the product.

## vPatchStatus

UpdateClassification	smallint(5), not null	Update classification: 100 -> Security Update – Critical 101 -> Security Update – Important 102 -> Security Update – Moderate 103 -> Security Update – Low 104 -> Security Update – Unrated 110 -> Critical Update 120 -> Update Rollup 200 -> Service Pack 210 -> Update 220 -> Feature Pack 230 -> Tool 900 -> Unclassified 999 -> Kaseya Patch Test
UpdateClassificationDescription	varchar(43), not null	Same as UpdateClassification in string format.
ReleaseDate	datetime(3), null	Patch release date
ApprovalStatus	smallint(5), not null	0 -> approved 1 -> disapproved 2 -> pending approval
ApprovalStatusDescription	varchar(16), not null	Same as ApprovalStatus in string format.
InstallSeparate	tinyint(3), not null	0 -> this can be installed together with other patches 1 -> this must be installed separately (its own reboot) from other patches
IsSuperseded	tinyint(3), not null	0 -> update is not superseded 1 -> update is superseded by a subsequent update
PatchAppliedFlag	int(10), not null	0 -> patch has not been applied 1 -> patch has been applied
PatchStatus	int(10), not null	0 -> this patch not scheduled to be installed 1 -> schedule this patch for install. Flags used to bundle all patches into a single script. Set when installation scripts are generated. 2 -> patch install failed, no alert sent 3 -> patch install failed and alert has been sent 4 -> patch installed and awaiting a reboot to reconfirm 5 -> schedule rollback for this patch 6 -> “install-as-user” patch not installed; User not logged in 7 -> Office patch not installed; User request to install declined or timed out 8 -> patch get/install failed, client login credential is invalid
PatchStatusDescription	varchar(42), not null	Same as PatchStatus is string format.
PendingManualInstall	int(10), not null	Patch selected by manual update (Machine Update or Patch Update): 0 -> not selected for installation 1 -> selected for installation
PatchIgnoreFlag	int(10), not null	0 -> process this patch 1 -> ignore this patch

InstallationWarning	varchar(22), not null	Returns 'Manual Install Only', 'Windows Update Only', 'Product Upgrade Only', "Internet-based Install", or an empty string.
InstallDate	datetime(3), null	timestamp when this patch was applied by the VSA
InstalledBy	varchar(100), null	Name of admin (if we installed the patch) or value from registry (if scanner returned the value)
Description	varchar(1500), null	Patch description
UninstallNotes	varchar(1500), null	Uninstall notes for the patch
patchDataId	int, not null	Key to the patchData table.

## vPatchStatusByAgent

Column Name	Type	Purpose
<b>vPatchStatusByAgent</b> Describes the patch status of an individual agent machine.		
Machine_GroupID	varchar(201), null	A concatenated representation of the machine id and the group id to which it is associated
agentGuid	numeric(26,0), not null	Unique 26 digit random number identifying this agent. Master record stored in machNameTab.
Machineld	varchar(201), null	Machine Name used for each agent
ComputerName	varchar(80), null	holds the computer name found in the OS
ReverseGroupName	varchar(100), null	Machine group, then organization the machine is assigned to.
GroupName	varchar(100), not null	Organization, then machine group the machine is assigned to.
OperatingSystem	varchar(16), null	Operating system of the computer.
OSInformation	varchar(150), null	Operating system information
CurrentUser	varchar(100), null	Currently logged on user.
LastLoggedOnUser	varchar(100), null	Previously logged on user.
LastCheckinTime	datetime(3), not null	Date/time the agent last checked in.
LastRebootTime	datetime(3), null	Date/time the agent machine last rebooted.
totalPatches	int(10), not null	total patches reported for agentGuid
installed	int(10), not null	total installed patches reported for agentGuid
missingApproved	int(10), not null	total missing approved patches reported for agentGuid
missingDenied	int(10), not null	total missing denied/ignored patches reported for agentGuid
missingManual	int(10), not null	total missing approved patches that require manual installations reported for agentGuid
pending	int(10), not null	total patches that are pending installation reported for agentGuid
notReady	int(10), not null	total patches that required the user to be logged in for installation and the condition was not met reported for agentGuid
failed	int(10), not null	total patches that failed installation reported for agentGuid
rebootPending	int(10), not null	total patches whose final installation status cannot be determined until after the next reboot reported for agentGuid

## vPatchStatusByAgent

initialUpdateRunning	int(10), not null	If true, initial update is running.
testStatus	int(10), null	This flag tells whether the current patch settings for this user have been tested or not. Every time the patch source path or user credential is changed, this flag gets reset. -2 – test pending -1,null – untested 0 – test passed >0 – test failed where bit 0 is set for a registry test error, bit 1 for a file test error (Credential might not have admin rights). 1 – Patch Test Failed (registry) 2 – Patch Test Failed (file) 4 – Patch Test Failed (registry and file) else – Patch file failed to install. 10000 – no exe file was downloaded 10001 – patch failed to copy from LAN server. 10002 – local credential failure 10003 – missing network credential failure 10004 – invalid network credential failure or LAN server was not available 10005 – file source configuration for this machine is invalid 10006 – invalid LAN Cache configuration or LAN Cache server was not available 61440 – exe file was downloaded but would not execute; credential might be invalid
testStatusDescription	varchar(89), not null	Description of above.
lastScanType	smallint(5), not null	Type of last patch scan; 0 -> Legacy scan 1 -> WUA scan (online) 3 -> WUA offline scan (WSUSSCN2.CAB) 4 -> Macintosh scan
lastScanTypeDescription	varchar(12), not null	Description of above.
scanStatus	varchar(20), not null	Unscanned Patch Scanned Succeeded Undetermined
nonSupportedOS	varchar(300), not null	Null if the machine's OS is supported for patching; OS element value from patchscn.xml if the OS is not supported for patching
lastPatchScan	datetime(3), null	Date/time the last patch scan occurred
nextPatchScan	datetime(3), null	Date/time the next patch scan is scheduled
patchScanRecurrenceLabel	nvarchar(512), not null	Label for patch scan schedule recurrence (ie. Every 1 month)
patchScanRecurrenceDetailsLabel	nvarchar(512), not null	Label for patch scan schedule detail (ie. On day 1 of the month)
patchScanExcludeTimeRangeLabel	nvarchar(512), not null	Label for patch scan schedule exclude time range
patchScanRecurrenceEndLabel	nvarchar(512), not null	Label for patch scan schedule end date time
patchScanOfflineLabel	nvarchar(256), not null	Label for patch scan schedule (Skip If Offline or Power Up If

	null	Offline)
lastAutomaticUpdate	datetime(3), null	Date/time automatic update last occurred
nextAutomaticUpdate	datetime(3), null	Date/time automatic update is next scheduled
autoUpdateRecurrenceLabel	nvarchar(512), not null	Label for auto update schedule recurrence (ie. Every 1 day(s))
autoUpdateRecurrenceDetailsLabel	nvarchar(512), not null	Label for auto update schedule detail (ie. On day 1 of the month)
autoUpdateExcludeTimeRangeLabel	nvarchar(512), not null	Label for auto update schedule exclude time range
autoUpdateRecurrenceEndLabel	nvarchar(512), not null	Label for auto update schedule end date time
autoUpdateOfflineLabel	nvarchar(256), not null	Label for auto update (Skip If Offline or Power Up If Offline)
wuaSelfUpdateRequired	tinyint(3), not null	WUA client self-update: 0 - Unknown 1 - Required 2 - NOT Required
wuaSelfUpdateRequiredDescription	varchar(12), not null	Description of code above.
online	int(10), null	0 -> offline 1 -> online 2 -> online and user has not used the mouse or keyboard for 10 minutes or more. 198 -> account suspended 199 -> agent never checked in (template account)

## vPortInfo

Column Name	Type	Purpose
vPortInfo Data collected by KaSmBios.exe during an audit on port connector information. There is one row per active slot. All information is retrieved from Type 8.		
Machine_GroupID	varchar(201), null	A concatenated representation of the machine id and the group id it is associated with.
agentGuid	numeric(26, 0), null	A globally unique identifier for a machine ID.group ID account and its corresponding agent.
machName	varchar(100), null	Machine Name used for each agent
groupName	varchar(100), null	Organization, then machine group the machine is assigned to.
InternalDesc	varchar(100), null	Internal Description
ExternalDesc	varchar(100), null	External Description
ConnectionType	varchar(100), null	Connection Type
PortType	varchar(100), null	Port Type

## vScriptLog

vScriptLog		Log of procedure executions as viewed by the Kaseya Server
Column Name	Type	Purpose
Machine_GroupID	varchar(201), null	A concatenated representation of the machine id and the group id it is associated with.
agentGuid	numeric(26, 0), null	A globally unique identifier for a machine ID.group ID account and its corresponding agent.
machName	varchar(100), null	Machine Name used for each agent
groupName	varchar(100), null	Organization, then machine group the machine is assigned to.
EventTime	datetime(3), null	Time stamp string representing the time the change was entered. (note: timestamp type was picked to force times into the database as year- month-day-hr-min-sec all in numeric format independent of the format sent in the SQL command. This allows records to be easily sorted by time during retrieval.)
ScriptName	varchar(260), null	Name of procedure
ScriptDesc	varchar(1000), null	Event description
AdminName	varchar(100), null	Admin name that scheduled this procedure.

## vScriptStatus

vScriptStatus		procedure status for each client
Column Name	Type	Purpose
Machine_GroupID	varchar(201), null	A concatenated representation of the machine id and the group id it is associated with.
agentGuid	numeric(26, 0), null	A globally unique identifier for a machine ID.group ID account and its corresponding agent.
machName	varchar(100), null	Machine Name used for each agent
groupName	varchar(100), null	Organization, then machine group the machine is assigned to.
scriptName	varchar(260), null	Name of procedure
LastExecTime	datetime(3), null	Time stamp string representing the last time that the procedure was executed
lastExecStatus	varchar(1000), null	Status of the last execution. The string will be one of the following: <ul style="list-style-type: none"> <li>Procedure Summary: Success &lt;ELSE or THEN&gt;</li> <li>Procedure Summary: Failed &lt;ELSE or THEN&gt; in # step</li> </ul> String replacements:



		<ul style="list-style-type: none"> <li>• &lt;ELSE or THEN&gt; is replaced with the respective word ELSE or THEN.</li> <li>• # is replaced by the number of steps that failed in the procedure. (This is not useful unless the process is allowed to continue after a failure.)</li> <li>• step is replaced by the work steps if the procedure failed more than 1 step.</li> </ul>
AdminLogin	varchar(100), null	Admin name that last scheduled this procedure. (Dont name this column adminName because that is a primary key used by database migration. adminName and emailAddr should not appear in the same table.

## vSystemInfo

vSystemInfo	Data collected by the System Info function.	
Column Name	Type	Purpose
Machine_GroupID	varchar(201), null	A concatenated representation of the machine id and the group id it is associated with.
machName	varchar(100), null	Machine Name used for each agent
groupName	varchar(100), null	Organization, then machine group the machine is assigned to.
Manufacturer	varchar(100), null	System manufacturer string
Product Name	varchar(100), null	Name or model number of the machine supplied by the manufacturer
System Version	varchar(100), null	Machine version string
System Serial Number	varchar(100), null	Machine serial number string entered by the manufacturer
Chassis Serial Number	varchar(100), null	Serial number string supplied by the manufacturer
Chassis Asset Tag	varchar(100), null	Asset tag string supplied by the manufacturer
External Bus Speed	varchar(100), null	Motherboard bus speed
Max Memory Size	varchar(100), null	Max memory this system may be configured with
Max Memory Slots	varchar(100), null	Max number of memory slots this system has
Chassis Manufacturer	varchar(100), null	Name of manufacturer of the chassis
Chassis Type	varchar(100), null	system chassis type
Chassis Version	varchar(100), null	version string of the chassis
Motherboard Manufacturer	varchar(100), null	Name of motherboard manufacturer

## vSystemInfoManual

Motherboard Product	varchar(100), null	Motherboard model name
Motherboard Version	varchar(100), null	Motherboard version number
Motherboard Serial Num	varchar(100), null	Motherboard serial number
Processor Family	varchar(100), null	processor family name
Processor Manufacturer	varchar(100), null	processor manufacturer name
Processor Version	varchar(100), null	processor version string
CPU Max Speed	varchar(100), null	max speed of this processor
CPU Current Speed	varchar(100), null	configured speed of this processor

\* Custom columns defined using Audit > System Info display in the **vSystemInfoManual** (page 46) database view.

---

## vSystemInfoManual

vSystemInfo		
Custom fields and values added to the System Info function.		
Column Name	Type	Purpose
Machine_GroupID	varchar(201), null	A concatenated representation of the machine id and the group id it is associated with.
agentGuid	numeric(26, 0), not null	Unique 26 digit random number identifying this agent. Master record stored in machNameTab.
fieldName	nvarchar(100), not null	The name of the custom field.
fieldValue	varchar(100), null	The value of the custom field.

---

## vTicketField

vTicketField		
Each ticket will have a set of fields associated with it. Three of these fields are standard fields, status, priority, and category. Also, a series of user fields can be added that will also be seen in this view. Each field has a datatype. All lists are stored as integer values. The view vTicketField has the associated text for each list value.		
Column Name	Type	Purpose
TicketID	int(10), null	unique trouble ticket ID number within a single partition.
TicketLabel	varchar(50), null	The label of the field
IntegerValue	int(10), null	The value of a integer field

NumberValue	numeric(15, 4), null	The value of a number field
StringValue	varchar(500), null	The value of a string field
ListValue	varchar(50), null	The value of a list field

---

## vTicketNote

vTicketNote	Trouble ticket notes are stored in the database. Each ticket summary can have multiple notes. There is a timestamp that identifies the order they were attached.	
Column Name	Type	Purpose
TicketID	int(10), null	unique trouble ticket ID number
author	varchar(100), null	person who wrote this note in the ticket
TicketNoteTime	datetime(3), not null	Timestamp identifying when the note was added
TicketNote	varchar(2000), not null	Contents of the ticket note
HiddenNote	int(10), not null	0 if the note is visible. 1 if the note is hidden.
partitionId	numeric(26, 0), not null	Tenant identifier.
CreationDate	datetime(3), null	The date/time the ticket was created.
DueDate	datetime(3), null	The due date of the ticket.

---

## vTicketSummary

vTicketSummary	Trouble ticket summary. One row per ticket. Column names are used as the names displayed in the view summary table.	
Column Name	Type	Purpose
TicketID	int(10), null	unique trouble ticket ID number
Machine_GroupID	varchar(201), null	A concatenated representation of the machine id and the group id it is associated with.
agentGuid	numeric(26, 0), null	A globally unique identifier for a machine ID.group ID account and its corresponding agent.
machName	varchar(100), null	Machine Name used for each agent
groupName	varchar(100), null	Organization, then machine group the machine is assigned to.
TicketSummary	varchar(256), not null	summary string briefly describing the ticket

## vUptimeHistory

Assignee	varchar(100), null	Admin name this ticket is assigned to
CreatedBy	varchar(100), null	admin name (or machine ID if entered by user) of the person that created this ticket
CreationDate	datetime(3), null	timestamp when the ticket was created
DueDate	datetime(3), null	ticket due date
LastModifiedDate	datetime(3), null	Date of the most recent note entered for this ticket
ResolutionDate	datetime(3), null	timestamp when the ticket was closed
UserName	varchar(100), null	The name of the submitter
UserEmail	varchar(200), null	The email address of the submitter
UserPhone	varchar(100), null	The phone number of the submitter
TicketInternalId	int(10), not null	An internal unique trouble ticket ID throughout all partitions.
partitionId	numeric(26, 0), not null	The unique tenant partition identifier for a shared Kaseya Server and database.

## vUptimeHistory

vUptimeHistory		
Column Name	Type	Purpose
Data collected for the uptime history report. Use in conjunction with the getMachUptime web service		
Machine_GroupID	varchar(201), null	A concatenated representation of the machine id and the group id it is associated with.
Machine_GroupID	varchar(201), null	A concatenated representation of the machine id and the group id it is associated with.
agentGuid	numeric(26, 0), null	A globally unique identifier for a machine ID.group ID account and its corresponding agent.
machName	varchar(100), null	Machine Name used for each agent
groupName	varchar(100), null	Organization, then machine group the machine is assigned to.
eventTime	datetime(3), null	timestamp of the beginning of the time segment
duration	int(10), null	Number of seconds this time segment lasted
type	int(10), null	1 – Agent on but cannot connect to Kaseya Server 2 – Agent on and connected to Kaseya Server 3 – Agent off normally 4 – Abnormal agent termination 5 – Agent alarms suspended (do not count suspended time when computing total uptime (function getMachUptime)) 6 – Suspend ended

loginName	varchar(100), null	Name of the user logged on during this time segment. (SYSTEM if no one was logged on).
-----------	--------------------	--

## vvProAssetDetails

Column Name	Type	Purpose
agentGuid	numeric(26,0), null	Unique 26 digit random number identifying this agent. Master record stored in machNameTab.
displayName	varchar(201), null	If the vPro machine has an agent on it then the display name is the machine.GroupId of a normal agent listing. Otherwise it is blank.
hostName	varchar(255), null	name of the machine on the LAN
computerName	varchar(255), null	holds the computer name found in the OS
assetId	varchar(50), not null	the asset Id is part of the basic hardware information
computerModel	varchar(65), null	Model designation of the computer
computerManufacturer	varchar(65), null	Manufacturer of the computer
computerVersion	varchar(65), null	Version number of the computer
computerSerialNumber	varchar(65), null	Serial number of the computer
mbManufacturer	varchar(65), null	Motherboard manufacturer
mbProductName	varchar(65), null	Product name of the motherboard
mbVersion	varchar(65), null	Version number of the motherboard
mbSerialNumber	varchar(65), null	Serial number of the motherboard
mbAssetTag	varchar(65), null	Asset tag for the motherboard
mbReplaceable	tinyint(3), null	True or false if the motherboard is replaceable
biosVendor	varchar(65), null	Vendor for the BIOS
biosVersion	varchar(65), null	Version number of the BIOS
biosReleaseDate	datetime(3), null	BIOS release date
biosSupportedFunctions	varchar(1000), null	List of BIOS supported features
ipAddress	varchar(19), null	ipAddress of the vPro machine used by power management and remote ISO boot



---

# Index

**C**

Crystal Reporting Usage • 2

**D**

Database Views and Functions • 1

**E**

Excel Usage • 1

**F**

fnMissingPatchCounts\_UsePolicy /  
fnMissingPatchCounts\_NoPolicy • 7  
fnOSCounts • 8

**V**

vAddRemoveList • 9  
vAdminNotesLog • 9  
vAgentConfiguration • 10  
vAgentLabel • 11  
vAlertLog • 12  
vBackupLog • 12  
vBaseApplicationInfo / vCurrApplicationInfo • 13  
vBaseCpuInfo / vCurrCpuInfo • 14  
vBaseDiskInfo / vCurrDiskInfo • 15  
vBaseDriveManufacturer / vCurrDriveManufacturer •  
15  
vBasePciInfo / vCurrPciInfo • 16  
vBasePrinterInfo / vCurrPrinterInfo • 16  
vCollectionMember • 17  
vConfigLog • 17  
vEventDetail • 17  
vEventInstanceDetail • 19  
vEventInstanceHistoryDetail • 20  
Views and Functions Provided • 5  
vLicenseInfo • 22  
vMachine • 22  
vMonitorAlarmAlert • 25  
vMonitorAlarmCounter • 26  
vMonitorAlarmProcess • 27  
vMonitorAlarmService • 27  
vMonitorAlarmSNMP • 28  
vMonitorAlarmSystemCheck • 29  
vNetStatsLog • 30  
vNtEventLog • 31  
vOnBoardDeviceInfo • 31  
vPatchApprovalPolicyStatus • 32  
vPatchApprovalStatus • 33  
vPatchConfiguration • 34  
vPatchPieChartCountsNoPolicy • 36  
vPatchPieChartCountsUsePolicy • 36  
vPatchPolicy • 37  
vPatchPolicyMember • 38  
vPatchStatus • 39  
vPatchStatusByAgent • 41

vPortInfo • 43  
vScriptLog • 44  
vScriptStatus • 44  
vSystemInfo • 45  
vSystemInfoManual • 46  
vTicketField • 46  
vTicketNote • 47  
vTicketSummary • 47  
vUptimeHistory • 48  
vProAssetDetails • 49